

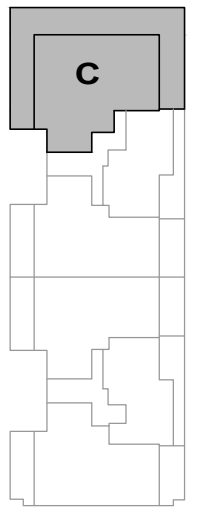
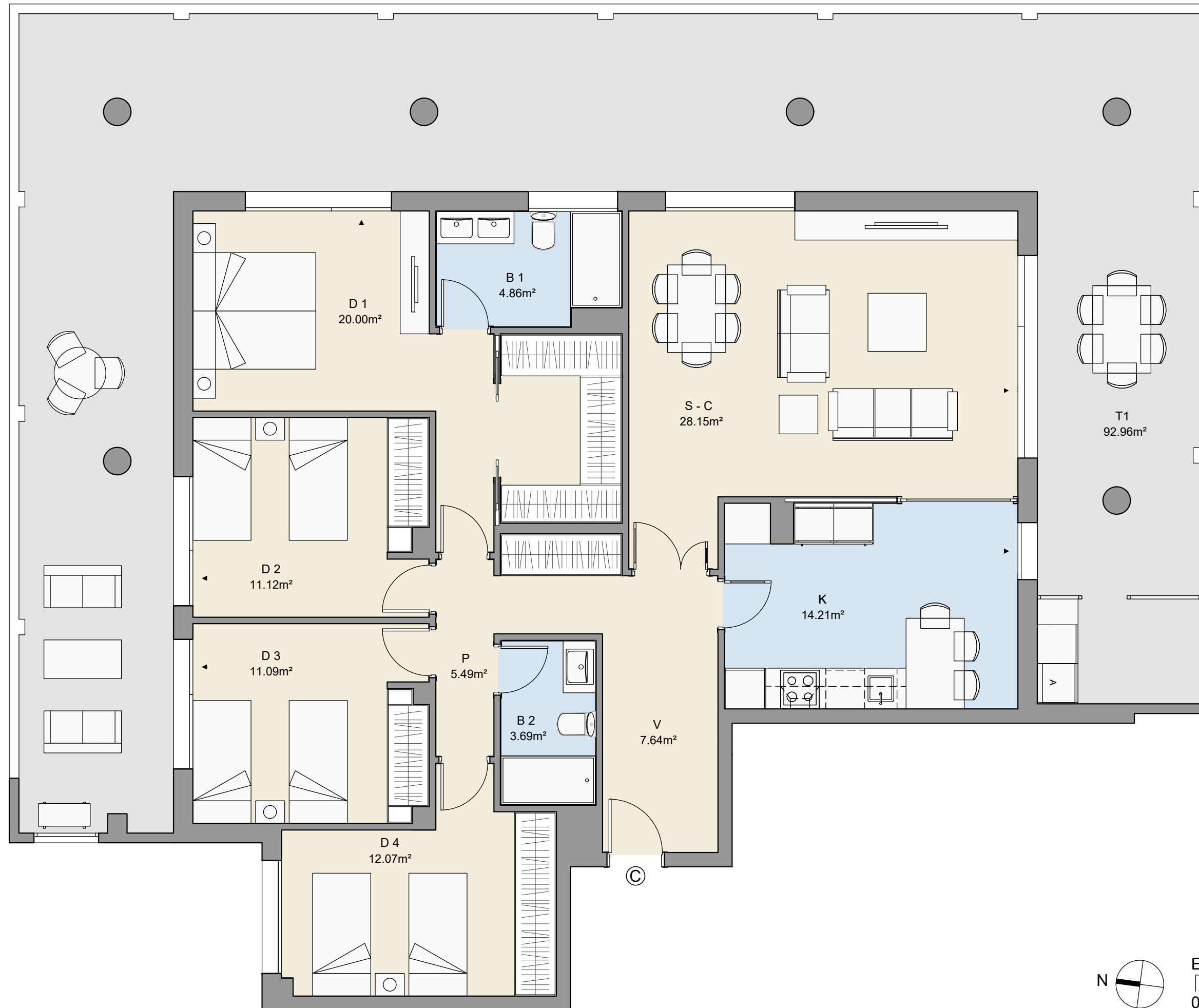
**ESC 2. PLANTA 1 - C**

**4 DORMITORIOS**

SUP. ÚTIL CERRADA : 118,32 m<sup>2</sup>

SUP. ÚTIL ABIERTA : 92,96 m<sup>2</sup>

SUP. ÚTIL TOTAL : 211,28 m<sup>2</sup>



CALLE CLAVEL



Escala gráfica

